

EME 
EL KROM MIDDLE EAST



ABOUT EL KROM MIDDLE EAST

Thanks to our streamlined, flexible, and dynamic organisational model, we offer our customers a complete, customised and efficient service. We handle sustainability and location studies; analysis of the technical and economic feasibility of new plants; basic design and detailed design; and the “turnkey” development of production plants, right up to their operation and global maintenance.

Our modus operandi strives for an open enterprise system capable of achieving the best possible integration between plant, territory, and social settings. EME, founded by professionals of the energy sector with over 30 years of experience, was started in order to extend the reach of engineering activities and services throughout the international market.

After opening branches and subsidiary companies in Poland, Tunisia, Egypt, Switzerland and through the creation of joint ventures with the leading companies in these countries, EME now aims to satisfy the growing needs of the worldwide energy sector, specialising in the construction of mechanical and electrical works through a consolidated experience in the installation and commissioning of gas turbines, steam turbines, air and water condensers, steam generators, auxiliary systems, BOP, prefabrication installation and interconnection of pipes throughout the plant.

The activities performed and services offered by EME throughout the market are characterised by a flexible and dynamic organisation, capable of performing a comprehensive study on sustainability and on the workplace, including an analysis of technical and economic feasibility of new production plants, basic design and detail and an accurate technical assistance of installations under construction since their operation to the global maintenance.

EME executes and manages the ordinary and preventive maintenance of installations through its own staff and equipment operating maximum levels of prevention, safety and environmental protection. As of today EME’s managerial structure, located in Egypt and supported by the organisation’s resources in Italy, with decades of experience in the field, is capable of handling a wide array of activities, ranging from high-pressure fast track projects to large and complex plants involving large workforces. EME is well equipped, not only in terms of manpower and expertise, but also in terms of machinery and equipment to handle the vast majority of requests in the complex and rapidly evolving market as well as the necessary expertise to utilise the proprietary special tools supplied by individual clients for specific activities.

OUR DEPARTMENTS

Plant Construction and Commissioning:

builds and supplies “turnkey” plants generating electricity from both renewable and conventional sources.

The production path is overseen throughout all its phases: from selecting, qualifying, and managing contractors and suppliers, to carrying out the civil works, mechanical assemblies and mounting of electrical instruments, and starting up and commissioning the plant.

Ordinary Maintenance and Total Operation Warranty:

performs and manages the ordinary and preventive maintenance of the plant through its own organisation of personnel and operating equipment at the utmost levels of prevention, safety, and environmental protection.

Development and Engineering:

structured for the development of new business initiatives in the major plants sector, following its administrative path and all subsequent technical phases, basic engineering and detailed engineering, with the support of latest-generation software. The department is organised in a number of divisions, each analysing and developing a particular engineering area:

I. Mechanical Plant:

active in 3D plant design using innovative software packages and in line with the market’s needs;

II. Specialised Engineering:

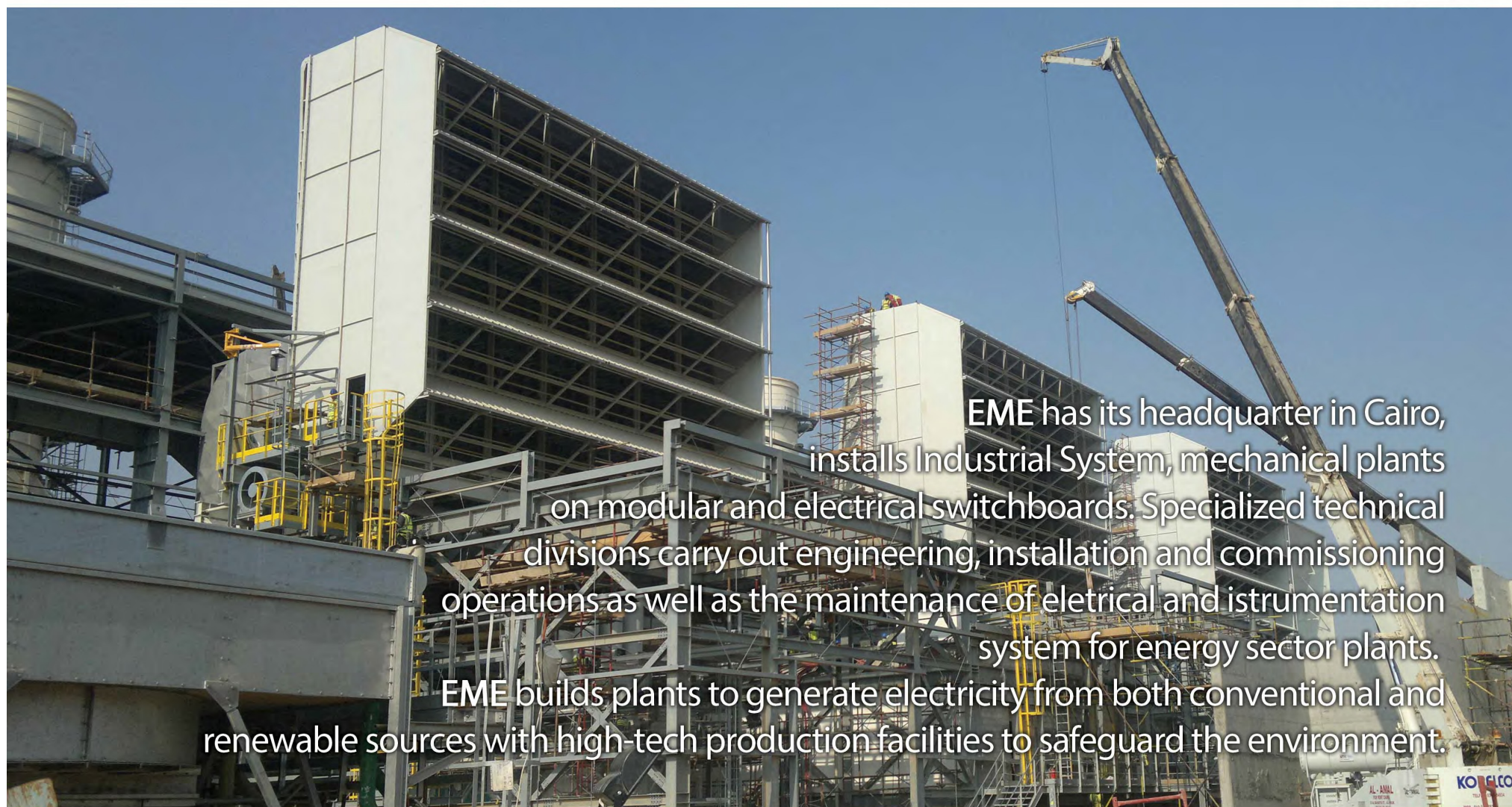
active in designing electrical plants, fire-fighting systems, ventilation and air conditioning systems, soundproofing systems, rendering, and photo manipulation;

III. Service:

guarantees extraordinary maintenance and quick action for gas turbines, steam turbines, alternators, and their auxiliary units, using its own specialists, minimising shut-down times and resulting costs for the client.



Extending the reach of engineering
activities and services throughout
the international power generation market
In Middle East, Africa, Asia, Europe,
South America and the Far East



EME has its headquarter in Cairo, installs Industrial System, mechanical plants on modular and electrical switchboards. Specialized technical divisions carry out engineering, installation and commissioning operations as well as the maintenance of electrical and instrumentation system for energy sector plants. EME builds plants to generate electricity from both conventional and renewable sources with high-tech production facilities to safeguard the environment.



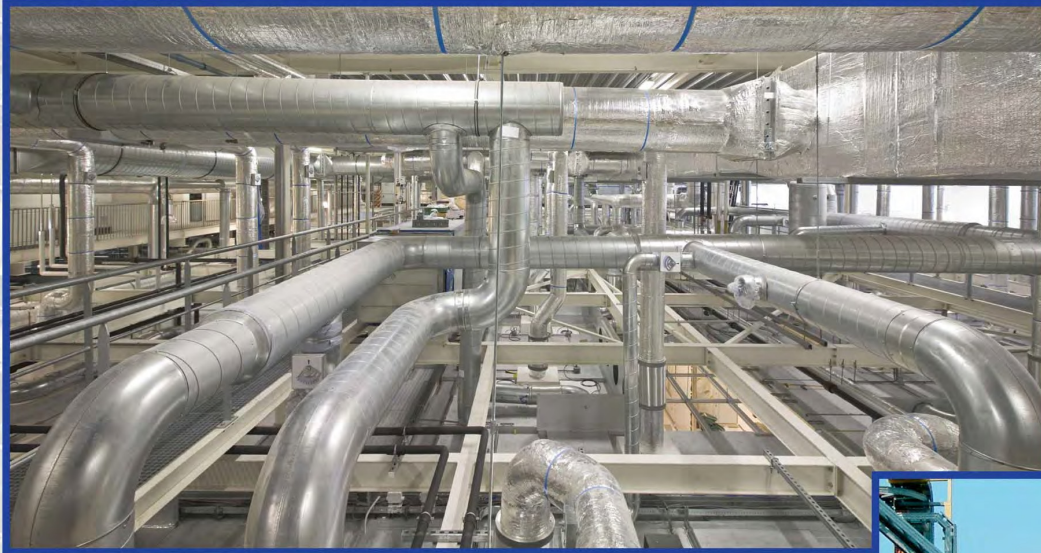
OUR ACTIVITIES

Design
Engineering
Prefabrication and installation piping
models for complete cycles P11, P22, P91

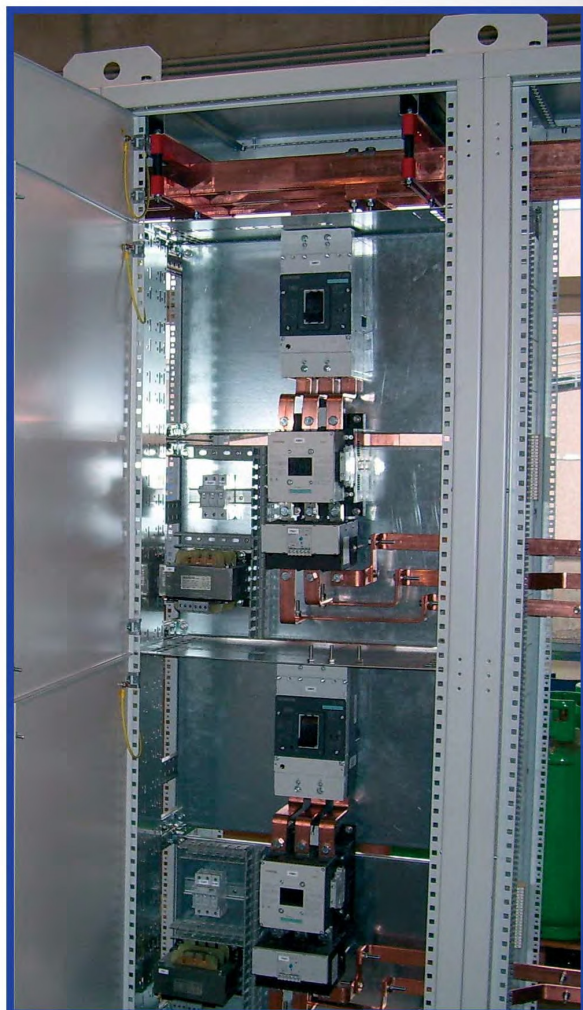




Installation component
Auxiliary and gas
Turbine steam turbine
Generator and condenser
Commissioning
Quality control
Check-up for fluidized bed boilers



Valves and supports
Pressure parts welding activities
Costruction and steel structure



INSTRUMENTAL CONTROL

Supply and installation:

electrical and instrumentation part, commissioning

Planning instrumentation and control of systems

industrial energy production plants

Installation and commissioning

Maintenance of systems for measuring:

temperature, pressure, conductivity, flow and control

Manufacturing:

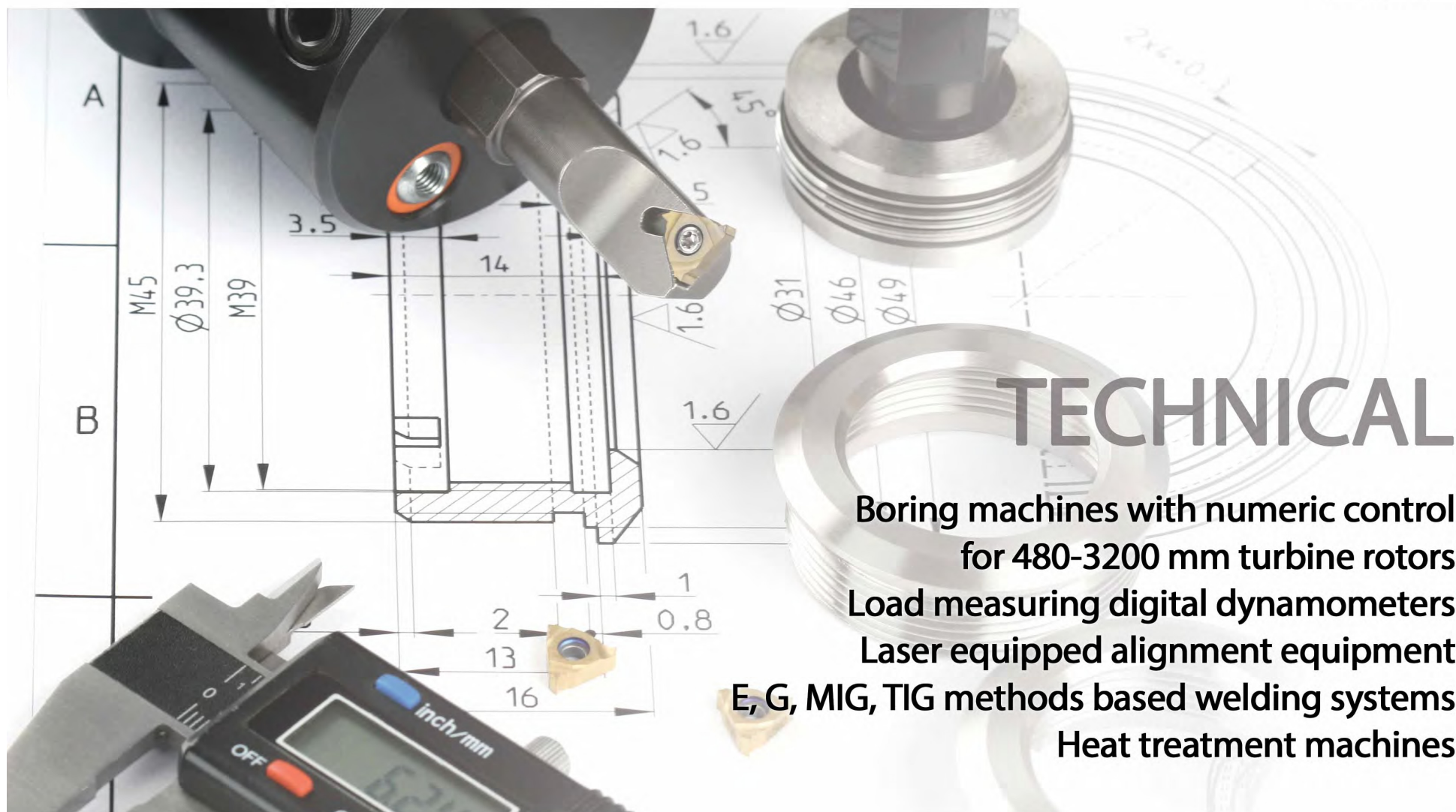
control panels and instrumentation cabinets

I & C materials and equipment for laboratory tests



SERVICE

Installation, assembly, maintenance, check up and revamping of steam turbines and gas turbines complete with air intake, discharge pipe, fuel and lubrication skids and the electro-equipment part - Installation maintenance and control of: high and low pressure pipes, pumps, lubrication/cooling, compressors, heat exchangers, condensers



RENEWABLE ENERGY SOURCES

EME is in a position to provide engineering, marketing and implementation services of PHOTOVOLTAIC and AEOLIC systems

Our services include:

Inspection and assessment of the actual situation

Drafting the feasibility stud

Estimation of costs comprising:

the preliminary plan

commencement notice

request of Environmental Impact Assessment (E.I.A.)

definite project planb

ank consultancy to obtain financial support correlated to then "Energy Account"

implementation of the "Turnkey" system

tests

drafting the maintenance manual





HOW WE WORK

Streamlined Efficiency:

EME strives for an open enterprise system capable of achieving the best possible integration between plant, territory, and social settings

Maintenance e Warranty:

ordinary maintenance and total operation warranty
performing and managing the ordinary and preventive
maintenance of the plant through our own organization
of employees and operating equipment at the utmost levels
of prevention, safety and enviromental protection

REFERENCE LIST

CLIENT/FINAL CUSTOMER - COUNTRY - START - END - WORK DESCRIPTION - PLANT

Ansaldo Energia / Enipower - Ferrera Erbognone(Italy) - 01/2004 - 04/2005
Meccanical and electrical and instrumentation systems
Combined cicle Thermal Power Plant 2x440 MW

Ansaldo Caldaie - Vasilikos (Cyprus) - 07/2004 - 9/2005
Boiler-Stack - Thermal Power Plant

Ansaldo Energia - Rzeszow e Lublin (Poland) - 05/2004 - 03/2006
Mectrical, instrumentation and mechanical erection works - Thermal Power Plant

Ansaldo Energia / Voghera Energia - Voghera(Italy) - 10/2004 - 04/2005
Meccanical electrical and instrumentation systems
Combined cicle Thermal Power Plant 1x440 MW

Ansaldo Energia / Enipower - Mantova (Italy) - 10/2004 - 06/2005
Meccanical electrical and instrumentation systems
Combined cicle Thermal Power Plant 1x440 MW

Ansaldo Nucleare / Renel - Cernavoda (Romania) - 10/2004 - 7/2006
Erection works supervision - Nuclear Plant, 2nd Unit

Ansaldo Energia - Gela (Italy) - 09/2005 - 04/2006
Supply and Meccanical electrical installation - Petrochemical Plant - Refinery

Ansaldo Energia / Roselectra - Enel - Calenia Energia - Santa Barbara - Rosignano
Sparanise (Italy) - 11/2005 - 12/2007
Supervision and start up Meccanical Electro Instrumental
Combined cicle Thermal Power Plant 1 - 2x440 MW

Ansaldo Energia / Enelpower - Santa Barbara (Italy) - 12/2005 - 04/2006
Meccanical Electrical and instrumentation erection works for GT/GEN/ST
Combined cicle Thermal Power Plant 1x400 MW

Ansaldo Energia / Piemonte Energia - Leini (Italy) - 06/2006 - 10/2007
Meccanical Electrical and instrumentation erection works of B.O.P. and GT/GEN/ST
Thermal Power Plant 1x400 MW - Cicle

Ansaldo Energia / Rizziconi Energia - Rizziconi (Italy) - 7/2006 - 08/2006
Supplies and Meccanical electrical works
Combined cicle Thermal Power Plant 2x400 MW

Ansaldo Energia / Calenia Energia - Sparanise (Italy) - 10/2006 - 06/2007
Supervision of erection works and start up assistance Combined cicle
Thermal Power Plant 2x400 MW

Ansaldo Energia / Roselectra - Rosignano (Italy) - 10/2006 - 03/2007
Electrical and instrumentation erection works for GT/GEN/ST
Combined cicle Thermal Power plant 1x400 MW

Demont / Enel - Escatron (Spain) - 06/2007 - 05/2008
Meccanical Electrical and instrumentation erection works for Boiler - Stack
Combined cicle Thermal Power Plant 2x440 MW

Ansaldo Energia / Enel - Escatron (Spain) - 06/2007 - 05/2008
Meccanical Electrical and instrumentation erection works - Boiler - Air Intake
Combined cicle Thermal Power Plant 2x440 MW

Ansaldo Energia / Enel - Escatron (Spain) - 06/2007 - 05/2008
Instruments check and alignment - Combined cicle Thermal Power Plant 2x440 MW

General Construction / Rizziconi Energia - Rizziconi (Italy) - 5/2007 - 10/2007
Supervision of Meccanical Electrical and Instrumentation erection works
Combined cicle Thermal Power Plant 2x440 MW

Siemens / Enel - Escatron (Spain) - 06/2007 - 08/2007
Realisation of fire detection system - Combined cicle Thermal Power Plant 2x440 MW

CLIENT/FINAL CUSTOMER - COUNTRY - START - END - WORK DESCRIPTION - PLANT

Adie / Ansaldo Energia - Escatron (Spain) - 08/2007 - 02/2008
Erection on turbine and generator Enclosures
Combined cycle Thermal Power Plant 2x440 MW

Ansaldo Caldaie / Compagnie Termique Du Gol - Isola Reunion (France)
07/2007 - 01/2008
Boiler-Stack - Sugar refinery

Alstom Power / Enel - Ostiglia Italy - 9/2007 - 11/2007
Start up meccanical electrical and instrumentation systems
Combined cycle Thermal Power Plant

Alstom Power - Mohammedia (Morocco) - 10/2007 - 06/2008
Maintenance activities on electrical and instrumentation systems
Combined cycle Thermal Power Plant

Ansaldo Energia Regulator Valves AP - MP, Gear-Rev.Gen.Gas Turbines GE,
Valve Socket, Regulator Valves AP - MP, Gear-Rrev.Gen. - Nero Montoro (Italy)
01/2008 - 03/2009
Combined cycle Thermal Power Plant

Ansaldo Fuel Cells / Tema - Bosco Marengo (Italy) - 12/2007 - 05/2008
Meccanical Electrical and instrumentation erection works
Foak Fuel Cell generation system

Ansaldo Energia / Iride Energia - Moncalieri (Torino) - 01/2008 - 03/2009
Supervision and start up - Combined cycle Thermal Power Plant

C106-M Ansaldo Energia / Electrabel - Amercoeur (Belgium) - 01/2008 - 07/2009
Supervision and start up - Steam Turbine 240 MW

Ansaldo Energia / Roselectra - Enel - Calenia Energia - Santa Barbara - Rosignano
Sparanise Italy - 01/2008 - 12/2009
Supervision and start up - Combined cycle Thermal Power Plants 1 - 2x440 MW

C104-M Ansaldo Energia / Iride Energia - Moncalieri (Torino) (Italy)
05/2008 - 05/2009
Erection works for GEN/ST - Combined cycle Thermal Power Plant

C107-M Tema / Fincantieri - Skidka (Algeria) - 03/2008 - 10/2009
Engineering, supply and installation of main distribution system condenser
Turbogas Power Plant 1x18,7 MW

C106-M Ansaldo Energia / Electrabel - Amercoeur (Belgium) - 05/2008 - 01/2009
Meccanical Electrical and instrumentation erection works for ST - Steam Turbine 240 MW

C101 Ansaldo Energia / Sorgenia - Turano Lodigiano(Italy) - 06/2008 - 05/2009
Engineering, supply and installation of prefabricated electric substations 15/0,42KV
Combined cycle Thermal Power Plant 2x440 MW

C105-M Ansaldo Energia / Enel Viesgo - Puente Nuevo (Spain) - 07/2008 - 09/2009
Meccanical Electrical and instrumentation erection works
Combined cycle Thermal Power Plant

C114 Ansaldo Energia - Cassano D'Adda - 09/2008 - 11/2008
Instruments check and alignment - Combined cycle Thermal Power Plant

C109 Siemens / Enel - Vare località (Italy) - 09/2008 - 02/2010
Meccanical Electrical and instrumentation erection works - Geothermal power plants

C113 Ansaldo Ricerche /Università - Savona (Italy) - 01/2009 - 08/2009
Electrical and instrumentation engineering, supply and erection
Experimental plant RIG 500

C128 Stopson / Ansaldo Energia - Algeiras (Spain) - 01/2009 - 02/2010
Erection on turbine and generator enclosures
Combined cycle Thermal Power Plant 400 MW

C131 Ansaldo Energia / Enel Viesgo - Algeiras (Spain) - 02/2009 - 11/2009
Fire fighting erection on turbine and generator enclosures
Combined cycle Thermal Power Plant 400 MW

C135 Ansaldo Energia / Enel Viesgo - Algeiras (Spain) - 04/2009 - 11/2009
Meccanical Electrical and instrumentation erection works for ST
Combined cycle Thermal Power Plant 400 MW

C126 Ansaldo Energia / Tecnimont - Vlore (Albania) - 01/2009 - 05/2009
Meccanical Electrical and instrumentation erection works for GT Gas Turbine 77 MW



CLIENT/FINAL CUSTOMER - COUNTRY - START - END - WORK DESCRIPTION - PLANT

C130 Ansaldo Energia - Larbaa (Algeria) - 01/2009 - 12/2009
Erection works and start up assistance - Air Intake-Boiler
Combined cycle Thermal Power Plant

C127 Ansaldo Energia / A.S.M. - Brescia (Italy) - 02/2009 - 04/2009
Electrical and instrumentation erection works for ST/GEN
Combined cycle Thermal Power Plant 85 MW

C132 Ansaldo Energia / ISAB - Priolo (Italy) - 01/2009 - 09/2009
Meccanical Electrical & instrumentation activities Gas Turbine

C133 Ansaldo Energia - Suomenoja (Finland) - 02/2009 - 05/2009
Supervision of erection works - Gas Turbine 170 MW

Ansaldo Energia / West Delta Electricity production Company - Sidi Krir (Egypt)
04/2009 - 06/2010
Mechanical and electro/instrument works, start-up supervision
Steam turbine, generator and auxiliares 350 MW

Ansaldo Energia / Middle Delta Electricity production Company - El Atf (Egypt)
04/2009 - 06/2010
Mechanical and electro/instrument works, start-up supervision
Steam turbine, generator and auxiliares 350 MW

C139 Ansaldo Energia - Larbaa (Algeria) - 04/2009 - 11/2009
Erection works and start up assistance - Combined cycle Thermal Power Plant

C145-M Ansaldo Energia - Nueva Ventanas (Chile) - 06/2009 - 10/2009
Supervision of Meccanical erection works - Combined cycle Thermal Power Plant

C146-M Ansaldo Energia - Napoli Levante (Italy) - 07/2009 - 09/2009
Start-up Supervision - Combined cycle Thermal Power Plant

C150 Siemens / IRIDE - Telessio Valsoera (Italy) - 09/2009 - 11/2010
Meccanical Electrical works - Hydro electric plant

C154 - Montagnini - Algesiras (Spain) - 09/2009 - 09/2009
Meccanical Electrical works - Rotating grids

C156 Ansaldo Energia - Moncalieri (Torino) - 08/2009 - 09/2009
Start-up Supervision - Combined cycle Thermal Power Plant

C16 Ansaldo Energia - Turano Lodigiano (Italy) - 10/2009 - 02/2010
Erection works Meccanical Elecrtostrumentale - Combined cycle Thermal Power Plant

C162 General Construction - Turano Lodigiano (Italy) - 10/2009 - 03/2010
Supervision of erection works - Combined cycle Thermal Power Plant

C165 Ansaldo Energia - Bayet (France) - 10/2009 - 10/2009
Supervision of erection works - Combined cycle Thermal Power Plant

C166 Ansaldo Energia - La Casella (Italy) - 11/2009 - 11/2009
Start-up Supervision - Combined cycle Thermal Power Plant

C168 Ansaldo Energia - Thisvi (Greece) - 12/2009 - 04/2010
Start-up Supervision - Combined cycle Thermal Power Plant

C170 General Construction - Turano L. (Italy) - 01/01/2010 - 28/02/2010
Electrical & instrumentation erection activities - ZLD plant

Ansaldo Energia - Sidi Krir (Egypt) - 4/2009 - 6/2010
Mechanical erection works for the package of the steam Turbine and its auxiliaries
and for the package for Generator and its auxiliaries - Steam turbine, generator
280 MW, condenser, piping and auxiliares

Ansaldo Energia - El Atf (Egypt) - 04/2009 - 06/2010
Mechanical erection works for the package of the steam - Turbine and its auxiliaries
and for the package for Generator and its auxiliaries - Steam turbine,
generator 280 MW, condenser, piping and auxiliares

Ansaldo Energia - Embalse Rio Tercero (Argentina) - 10/2011 - 02/2012
Revision LP Section Steam Turbine - Nuclear Plant 700MW

Ansaldo Energia / Cairo Electricity Production Company - 6th October (Egypt)
07/2011 - 08/2012
Mechanical and electro/instrument works, start-up supervision n° 4 Gas turbine,
generators and auxiliares 250 MW

CLIENT/FINAL CUSTOMER - COUNTRY - START - END - WORK DESCRIPTION - PLANT

Ansaldo Energia - Banha (Egypt) - 12/2012 - 08/2014
Mechanical and electro/instrument works, start-up supervision
Steam turbine, generator 280 MW, condenser, piping and auxiliaries

Ansaldo Energia - North Ghiza (Egypt) - 12/2012 - 02/2015
Mechanical and electro/instrument works, start-up supervision n°3 Steam turbines,
generators 280 MW, condensers, piping and auxiliaries

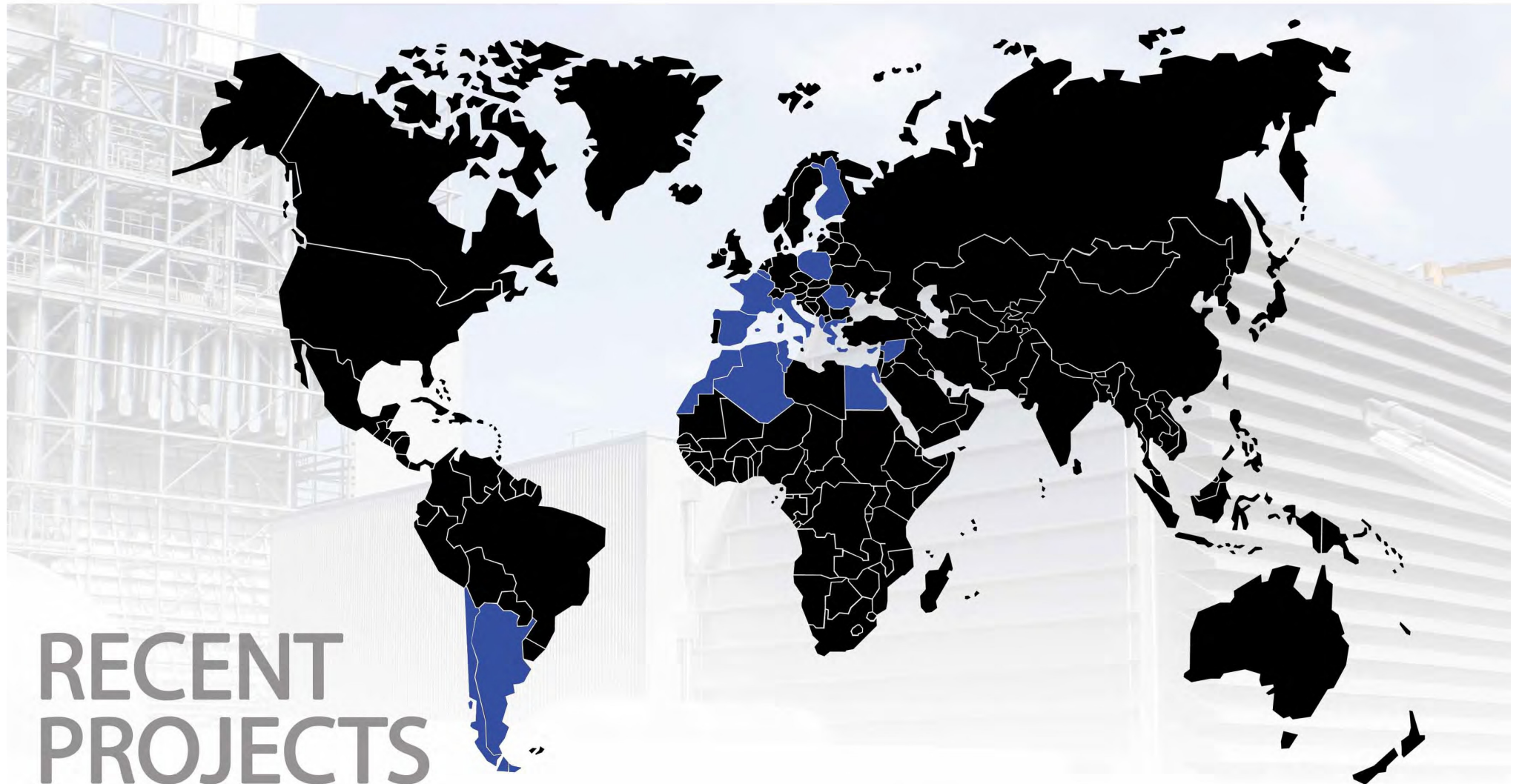
Ansaldo Energia / Cairo Electricity Production Company - 6th October II (Egypt)
10/2013 - feb-15
Mechanical and electro/instrument works, start-up supervision n° 4 Gas turbine,
generators and auxiliaries 250 MW

Ansaldo Energia - Deri Ali (Siria) - 05/2012 - prev '06/2015
Mechanical and electro/instrument works, start-up supervision
Combined cycle Thermal Power Plant 701 MW CCPP

Ansaldo Energia - Sousse C (Tunisia) - 11/2012 - 08/2014
Electro/instrument works, start-up supervision
Combined cycle Thermal Power Plant 460 MW CCPP

Ansaldo Energia - Sousse D (Tunisia) - 08/2014 - prev '08/2016
Electro/instrument works, start-up supervision
Combined cycle Thermal Power Plant 460 MW CCPP

Orascom Installation works of 4 x 125 MW CTG Units (Power Island) Engineering,
Supply, Construction, Installation and Testing of Assiut Simple
Cycle Power Plant 1000 MW Fast track Project, Egypt .8 x 125 MW Power Plant
Assiut Simple Cycle Power Plant 1000 MW Fast track Project,
Egypt .8 x 125 MW Power Plant feb-15 prev '08/2015



RECENT PROJECTS

ITALY

Turano L. ZLD plant
La Casella Combined Cycle Thermal Power Plant
Moncalieri Combined Cycle Thermal Power Plant
Telesio Valsoera Hydro Electric Plant

ALGERIA

Larbaa Combined Cycle Thermal Power Plant
Skidka Turbogas Power Plant 1x18,7 MW

SYRIA

Deri Ali Combined Cycle 701MW CCPP

TUNISIA

Sousse D Combined Cycle Thermal 460MW
Sousse C Combined Cycle Thermal 460MW

EGYPT

6th October 4x250MW GT, Generators, Auxiliaries
Banha 280MW Steam Turbine, Generator,
Condenser, Piping, Auxiliaries
North Giza 280MW Steam Turbine, Generator,
Condenser, Piping, Auxiliaries
6th October II 4x250MW GT, Generators,
Auxiliaries Assiut Simple Cycle Power Plant
1000 MW Fast track

CHILE

Nueva Ventanas Combined Cycle
Thermal Power Plant

ARGENTINA

Embalse Rio Tercero Nuclear Plant 700MW

POLAND

Rzeszow and Lublin Combined Cycle
Electrical, instrumentation and mechanical
erection works

ROMANIA

Cernavoda Erection works supervision
Nuclear Plant 2nd Unit

FRANCE

Bayet Supervision of erection works
Combined cycle Thermal Power Plant

SPAIN

Algeiras Erection on turbine and generator enclosures
Combined cycle Thermal Power Plant 400 MW

Current Projects

- **Orascom** New Capital 4800 MW 2x2400MW Complete Module
- **Ansaldo Energia** 6th October Phase III – Add-On 4x150MW 1x Steam Turbine, Auxiliaries and BOP Piping
- **Orascom** Combined Cycle Power Plant 1x Steam Turbine 250MW, Generator, CCW Cooler, Auxiliaries and Accessories
- **Ansaldo Energia** Al Shabab Steam Turbine 2x 265 MW + BOP
- **Ansaldo Energia** West Damietta Steam Turbine 265 MW + BOP + Condenser

Currently employed manpower: approx. **3000** people





CONTACT INFORMATION

New Cairo

1st district - East Ring Road

Renaissance Building - Part 4

Example (A) - Neighborhood

Apartment 15 first floor

Tel. + 20 127 33152233

www.elkrommiddleeast.com

info@elkrommiddleeast.net

